

CAL 7000E (BC-7600 series+H-120)



WxHxD: 1270x820x850 mm Weight: 185 kg

CAL 7000 (200)



WxHxD: 1400x820x1070 mm Weight: 255 kg

CAL 7000 (111)



WxHxD: 2460x820x1070 mm Weight: 500 kg

CAL 7000 (1111)



WxHxD: 3160x820x1070 mm Weight: 590 kg

CAL 7000 (2111)



WxHxD: 3860x820x1070 mm Weight: 720 kg

Workbench (Optional)



CAL 7000 NEW

Cellular Analysis Line with All-in-One Solution

Maximizing Efficiency Through One Process Solution



Solutions Provide Greater Ease and Efficiency with Reliable Results in a Single Aspiration



MC-80 Automated Digital Cell Morphology

MC-80 provides ultra-high resolution images to reappear the real view under the microscope. By using advanced Multi-layer fusion technology, it accurately restores the pathological features of cells, which is helpful for early screening of blood diseases and infectious diseases.

60 Slides/hour
Industry-leading high throughput



SC-120 Auto Slide Maker & Stainer

Mindray provides original slides to ensure quality of blood smears and reliable performance of SC-120. It supports multiple staining protocol, such as Wright stain, Wright-Giemsa stain, and May-Grunwald-Giemsa stain.



CAL 7000

Versatile, Compact and Scalable Solutions

- CBC+DIFF: 220 T/H
- CBC +DIFF+ESR : 180 T/H
- HbA1c: 120 T/H
- Slide Maker & Stainer: 120 Slides/H
- Digital Cell Analysis: 60 Slides/H



H-120 Automated Glycohemoglobin Analyzer

The H-120 offers the gold-standard High Performance Liquid Chromatography (HPLC) method, ensuring repeatability $\leq 1\%$. The standard mode, operating at a high throughput of 120 tests per hour, flags 6 hemoglobin variant interferences (HbC/HbD/HbS/HbE/HbJ-Bangkok/HbUbe-2) as "Suspected variant" and automatically switches to variant mode.



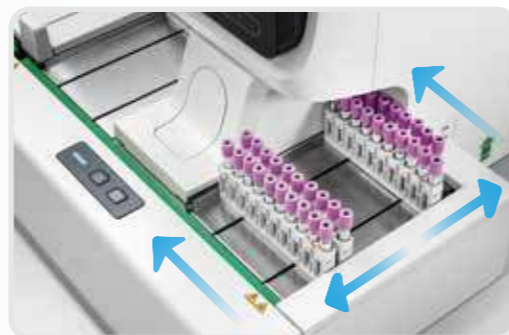
easy-w
≤40s

BC-7600 Series Auto Hematology Analyzer

BC-7600 Series Auto Hematology Analyzers provide comprehensive solutions for complete blood count (CBC), differential white blood cell count (DIFF), hematological malignant cells, low-value WBC/PLT, PLT clumps, etc. They also provide NRBC results in every CBC + DIFF test without extra reagents or cost, and support the analysis of body fluids. Based on photometric method, they can provide reliable CBC/CD+ESR result in the single instrument within 40 seconds.



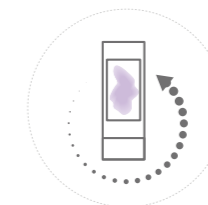
When the sample results trigger the criteria, the autoloader of each analyzer will return the sample racks for automatic rerun or reflex check.



The bidirectional loading track, with patent technology, on the first hematology analyzer enables fast sample distribution, improving efficiency and productivity.



- Support autoloading of whole blood and micro whole blood samples.
- The tube racks could be customized based on different colors to differentiate specific testing modes, such as "CD" and "CDR" test mode.



Re-exam: transport the samples that require blood smears, as per the pre-defined re-exam criteria

The re-exam criteria on CAL 7000 can be defined by many conditions, such as patient age, gender, department, historical result etc. This helps minimize the number of blood smears.



Repeat: repeat the previous test (in case of some system errors)



Rerun: keep the previous test result, and rerun the sample in the same test mode (for suspect results)

Reflex: add some test items such as "PLT-O" (in case of suspected results)

The CAL 7000 can automatically distribute the samples with "Repeat", "Rerun" and "Reflex" criteria which are pre-defined by users.



Easy handling by one person

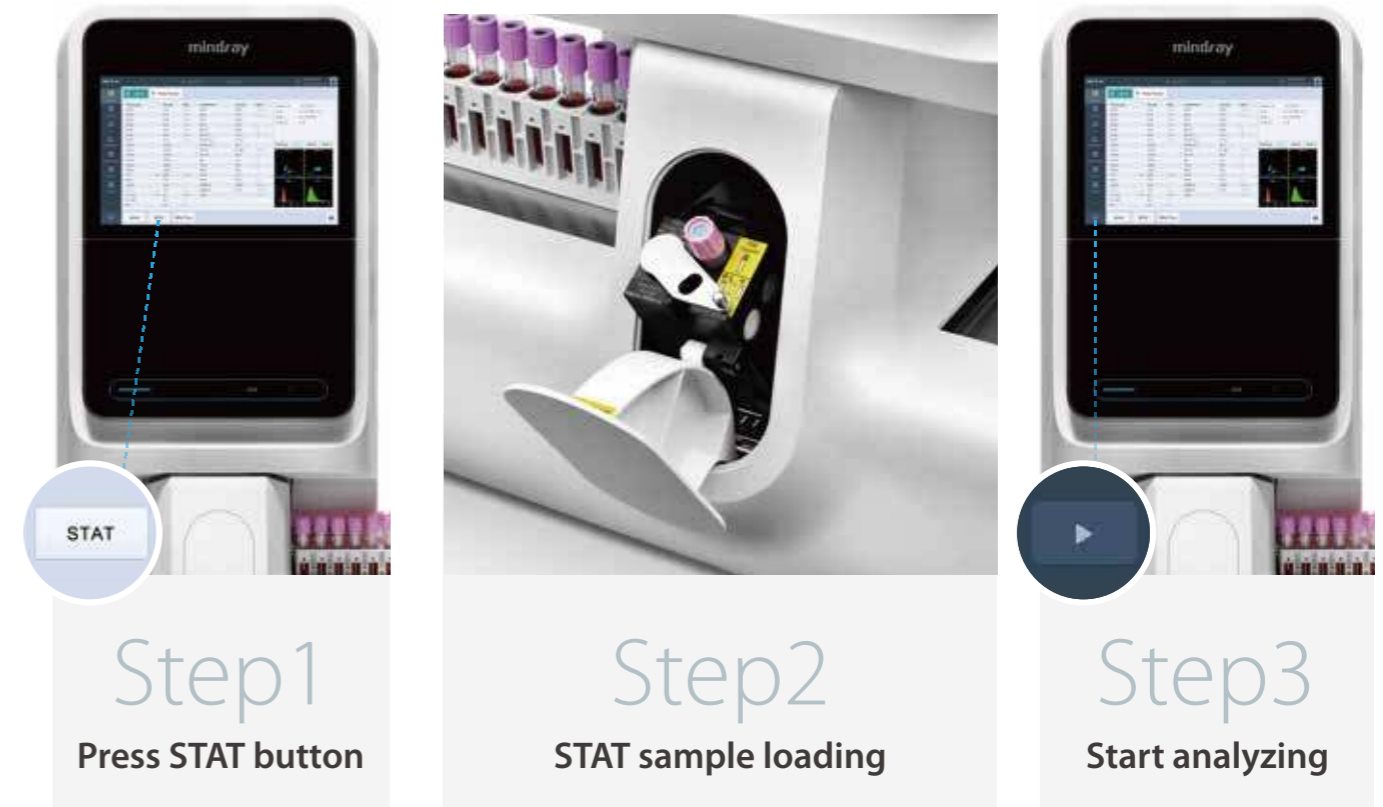
CR-30[H] Concentrated Reagent Delivery System

- Replace reagent once a week*
- Replace DCT diluent without interrupting workflow
- Directly provide deionized water for SC-120
- Reliable and stable performance of diluted reagent

* The frequency may change according to different scenario



STAT-Single sample



STAT sample could load ahead that reduce the TAT of emergency. By utilizing the patent adapter, many types of tubes are allowed.



STAT-Batch samples

The batch samples could be loaded before any of the waiting racks.

Load or unload samples freely

Users could load samples in any of the loading areas and pick up samples from any of unloading area anytime.

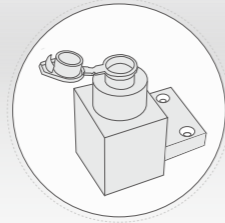
1,2,3 Load & Go

Just by following 3 simple steps of "load and go", operators of SC-120 Slide Maker & Stainer are able to obtain finished slides which are ready for microscopic analysis. Up to 150 blank slides and 10 cassettes holding 10 slides each can be loaded at a time.

1 Load slides

2 Load cassettes

3 Go finished slides



The SC-120 can make smears from capillary samples as minimum samples required is only 25µL.

Independent Batch Staining Mode



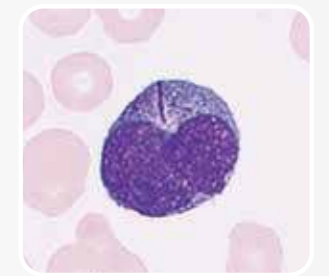
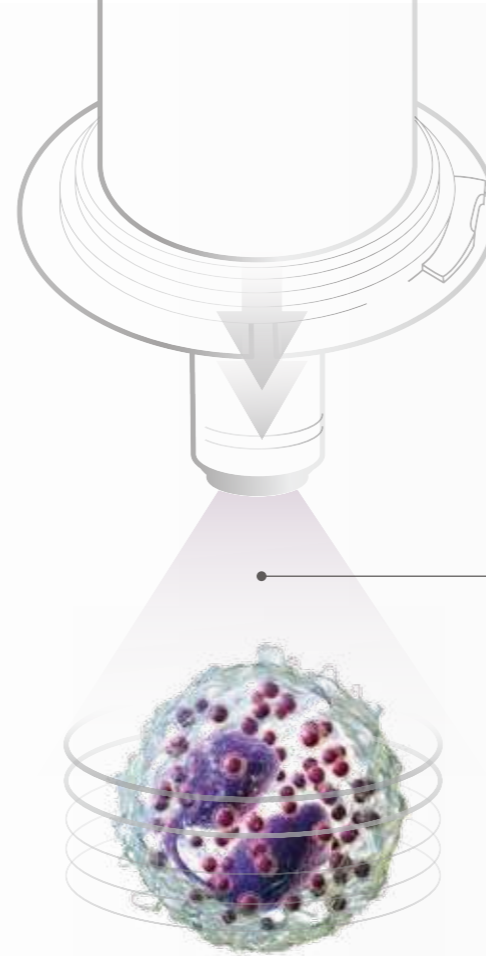
Capture comprehensive pathological features of each cell

Multi-layer fusion technology

Simulates manual focus adjustment and accurately restores the pathological features of cells, which is helpful for early screening of blood diseases (such as acute promyelocytic leukemia) and infectious diseases.

High-speed continuous capturing

Fuses all images to capture concise pathological features

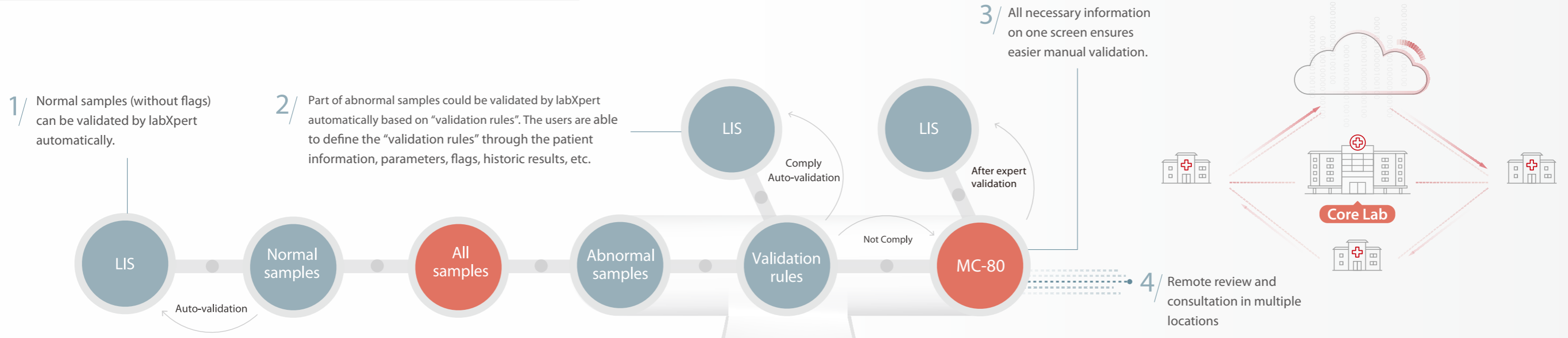


Capture all details with more than 20 depths of field

Overview images of the body fluid sample



New working procedure helps you enhance the efficiency



The labXpert software optimizes following functions to simplify your workflow for data analysis:

- Improved re-exam criteria function with multi-conditions setup
- Auto-validation for normal samples
- More intuitive interface to review and validate pathological samples

Remote consultations

Analyze the slide automatically

Stain the slide automatically

System Management
Continuous monitoring of equipment and reagents status